



## Type MD9000 SR Slit Rectangular Remote Lens



- **Robust Stainless Steel housing rated IP66**
- **2° x 15° Field of View**
- **Slit Field of View at low cost**
- **400°C ambient temperature rating**
- **Complete with integral “L” mounting bracket**
- **Utilizes Linearized flexible armored fiber optic cables**

## General Description

The Type SR Slit Rectangular Lens is specifically engineered for mounting in high ambient temperatures very close to the product line. It can be used in area where with heavy steam or water present. This lens is highly suited to Hot Bar and Rod Mills where bouncing about the center line occurs. Also suited for Hot Mill Strips Mills and Hot Plate Mills.

The SR lens is supplied with a robust stainless steel housing rated IP66. It is designed for High ambient temperatures up to 400°C.

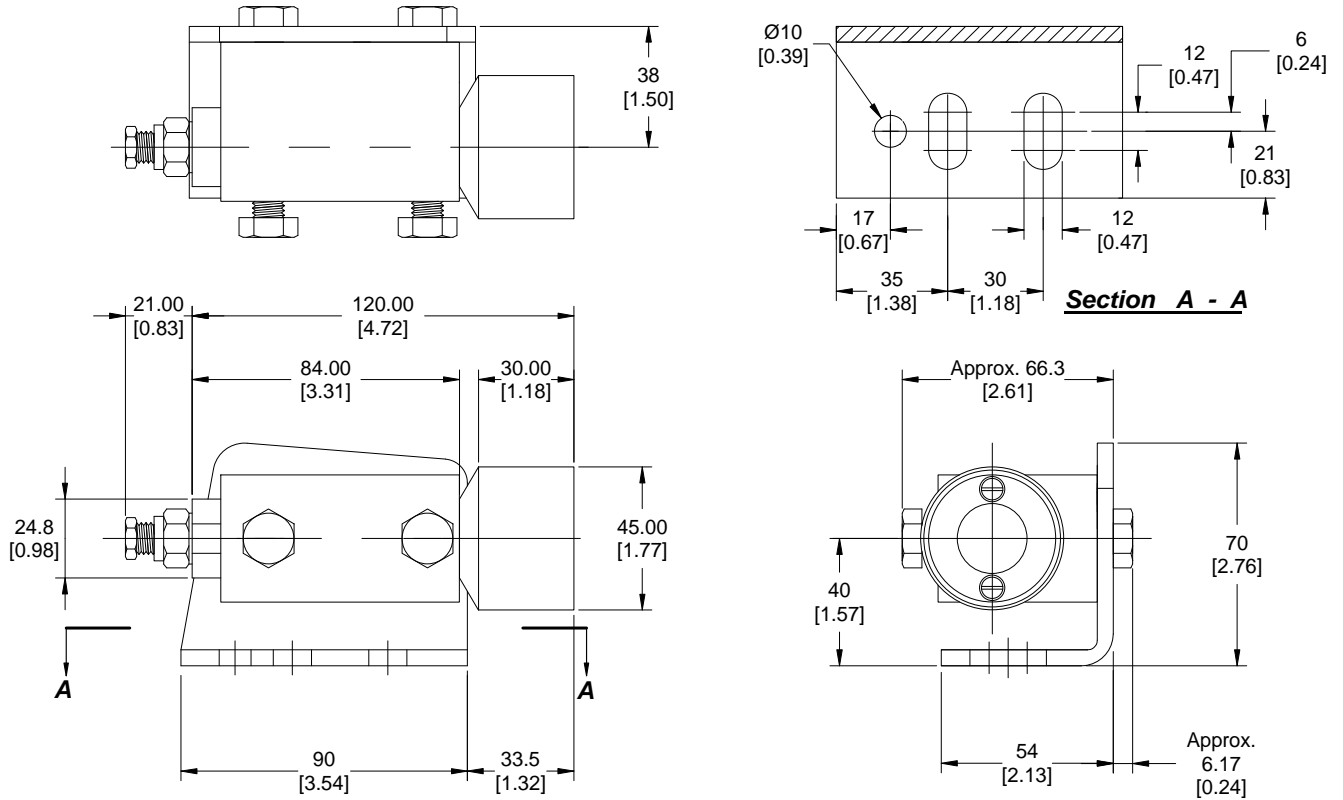
The Type SR Slit Rectangular Lens is used in conjunction with the Moduloc Model MD9100 and MD95100 Moduloc Hot Metal Detectors. These detectors are activated by the infrared radiating from the hot metal or product. This infrared energy is concentrated via the lens system and multi-strand fiber optic lead onto a photodiode that activates a switched output once this IR energy exceeds a present level. These detectors comprise an electronic controller within a mounting cradle, a flexible stainless sheathed Fiber Optic Lead and a Remote Lens in various configurations. The remote lenses may be installed close to hot product in areas of high ambient temperature with heavy steam or water present. This interchangeability of lenses, together with alternate lengths of optic lead allows the user to adopt one standard Sensor whilst utilizing a variety of lenses to suit individual installation requirements. This also allows the user to adopt one standard detector whilst utilizing a variety of lenses to suit individual installation requirements.

## MODULOC<sup>®</sup> Technology - The Total Sensor Solution

MODULOC<sup>®</sup> Control Systems Ltd.  
Wheathamstead, Hertfordshire, AL4 8SB United Kingdom  
Phone: +44 (0)845 8736501 FAX: +44 (0)1582 831980  
E-Mail: sales@moduloc-intl.com Website: www.moduloc-intl.com

MODULOC<sup>®</sup> Control Systems, Inc.  
500 Garden City Drive. - Suite 2B, Monroeville, PA 15146 USA  
Phone: 412-824-1260 FAX: 412-824-8890  
E-Mail: sales@moduloc-usa.com Website: www.moduloc-usa.com

# Dimensions



# General Specifications

Dimensions are in mm's [inches]

<b>Housing:</b>	Stainless Steel, Brass and Glass
<b>Housing Rating:</b>	IEC IP65, DIN, 89011
<b>Mig Bracket:</b>	Cadmium Plated Steel
<b>Weight:</b>	1.09 Kg (2.4 lbs)
<b>Temperature Rating:</b>	-20°C to +400°C

Type SR Lens Information	
<b>Lens Type</b>	SR
<b>Field of View (FOV)</b>	2° x 15°
<b>Scanned Area (mm) at 1 meter</b>	40 x 300

## MODULOC<sup>®</sup> Technology - The Total Sensor Solution

**MODULOC<sup>®</sup>**  
Control Systems

We reserve the right to alter specifications without prior notice. Specifications without tolerances are typical values.

Your Local Sales Representative:



Bulletin MC-MD9000-SR-10-02  
February 2010